

 **QI**

**Rural Stroke Improvement Group**

What Does the Data Tell Us?

Michelle Gardner  
American Stroke Association

---

---

---


---

---

---

---

---

 **QI**

**Stroke and CMS**

What is happening nationally?

---

---

---


---

---

---

---

---

 **QI**

The Centers for Medicare and Medicaid Services (CMS) recently released its fiscal year 2010 Medicare Inpatient Prospective Payment System (IPPS) Proposed Rule.

**1. CMS has proposed including a set of eight stroke measures in the Medicare Reporting of Hospital Quality Data for Annual Payment Update (RHQDAPU) program in fiscal year 2012. The proposed measures are:**

- Deep vein thrombosis (DVT) prophylaxis by end of hospital day two
- Discharged on antithrombotic therapy
- Patients with atrial fibrillation/flutter receiving anticoagulant therapy
- Thrombolytic therapy administered
- Antithrombotic therapy by end of hospital day two
- Discharged on statin medication
- Stroke education provided
- Assessed for rehabilitation

---

---

---


---

---

---

---

---

 **QI**

2. CMS has proposed adding a structural measure intended to assess the characteristics and capacity of a hospital to deliver quality stroke care

- The proposed structural measure would ask the hospital to report whether it participates in a **Systematic Clinical Database Registry for Stroke Care**. We believe that this measure could have a significant positive impact on patient care. **Studies have shown that use of stroke registries, such as Get With The Guidelines-Stroke (GWTG-Stroke), have a positive impact on the quality of care patients receive.**

---

---

---


---

---

---

---

---

 **QI**

**What is happening in Wisconsin**

- 25 PSC Hospitals
- 63 GWTG - Stroke hospitals (51% of WI Hospitals)
  - Up from 55 at last report
  - 29 Hospitals in Rural Stroke group**

---

---

---


---

---

---

---

---

 **QI**

**Wisconsin Awards**

- GWTG Performance Achievement Award winners. 85% compliance with GWTG- Stroke Achievement Measures
  - Bronze (90 day award)
    - 3 (5%)
  - Silver (12 month award)
    - 8 (13%)
  - Gold (24 months or more award)
    - 7 (11%)

---

---

---

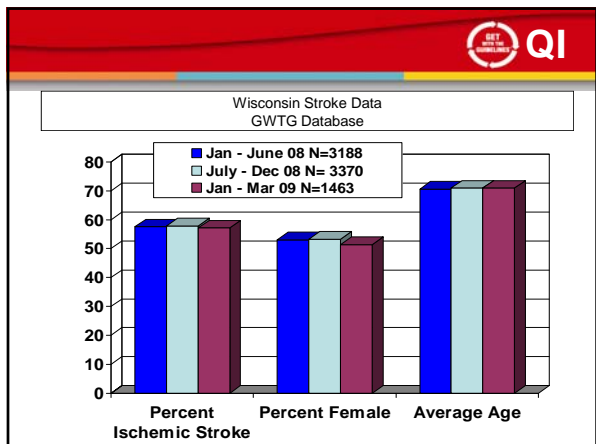
---

---

---

---

---




---

---

---

---

---

---

---

---

---

---

- Rural WI Group**
- Nine hospitals will be at a Get With The Guidelines award level- more to come!
  - Congratulations to Diane Park and Agnesian on becoming a Primary Stroke Center
  - The success of year one has been nationally published in *Circulation*

---

---

---

---

---

---

---

---

---

---

**WI Rural Stroke Group**

Baseline data, Q4-07 through Q3-08 and percent change from baseline

Anticoagulation for AF	90.30%	72.70%	81.80%	77.80%	80.00%	-10.30%
D/C Antithrombotics	93.70%	95.20%	95.60%	94.50%	97.10%	3.40%
DVT prophylaxis	62.70%	29.20%	68.20%	73.70%	82.60%	19.90%
Early Antithrombotics	85.60%	91.70%	88.70%	86.20%	94.00%	8.40%
IV-tPA 2 Hour	20.00%	0.00%	30.00%	30.00%	14.30%	-5.70%
LDL 100	49.20%	63.00%	61.30%	65.00%	55.00%	5.80%
Smoking Cessation	63.30%	76.90%	57.10%	81.80%	100%	36.70%
Dysphagia Screen	29.40%	47.70%	50.00%	36.90%	62.10%	32.70%
Rehabilitation Considered	80.70%	90.50%	87.90%	94.50%	85.50%	4.80%
Stroke Education	14.30%	5.30%	22.20%	26.50%	33.30%	19.00%
Composite Score	52.50%	59.00%	64.00%	65.20%	69.40%	16.90%
-Number of Patients *Data as of 4/15/09	294	83	132	120	109	

---

---

---

---

---

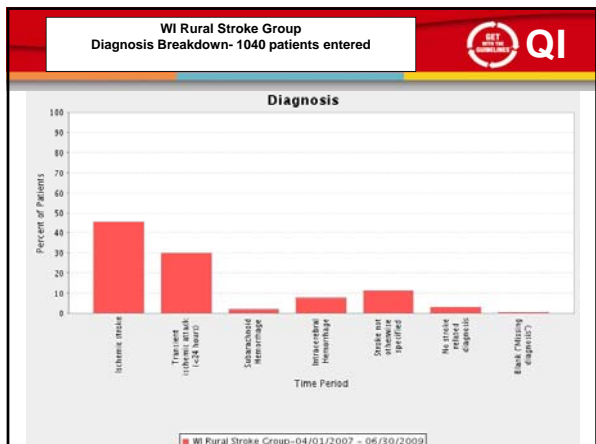
---

---

---

---

---




---

---

---

---

---

---

---

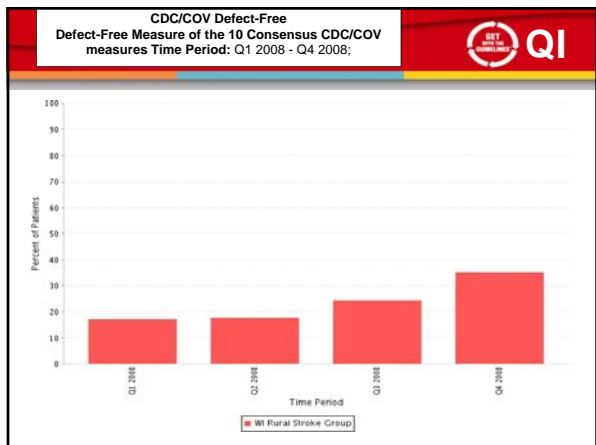
---

---

---

---

---




---

---

---

---

---

---

---

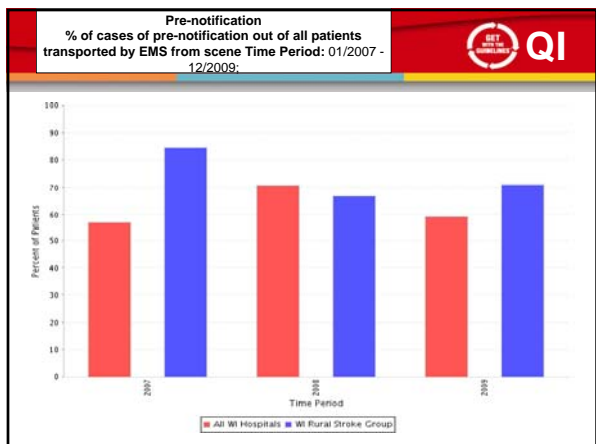
---

---

---

---

---




---

---

---

---

---

---

---

---


---

---

---

---



**Questions** 

- [Michelle.Gardner@heart.org](mailto:Michelle.Gardner@heart.org) or 414-227-1411
- [Support@outcome.com](mailto:Support@outcome.com) 1-888-526-6700

---

---

---

---

---

---

---