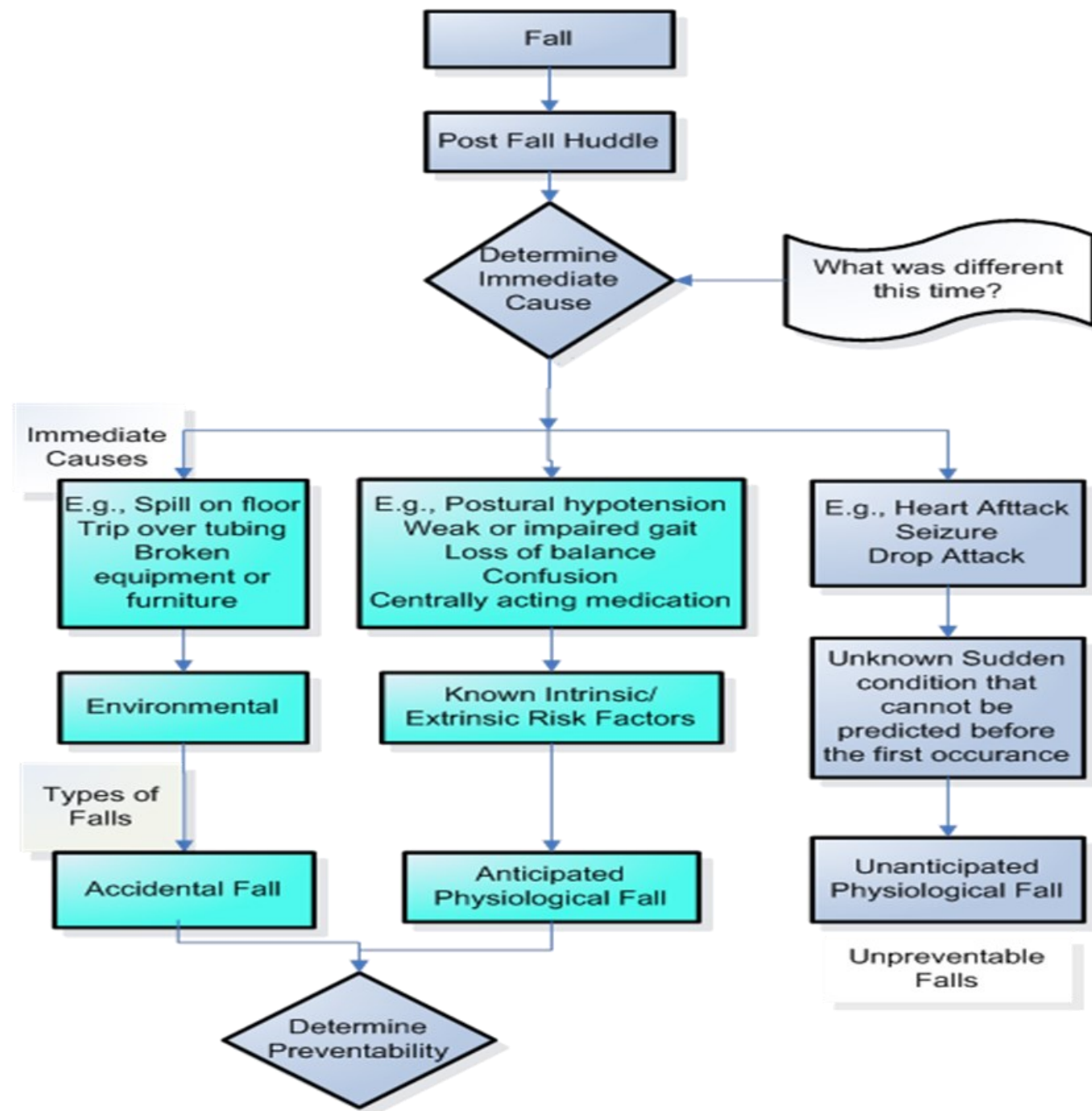


Decision Tree for Types of Falls

Tuesday, April 22, 2014



Determine Preventability

Step 1: Conduct the Post Fall Huddle.

Step 2: Determine the Immediate Cause of the Fall.

Step 3: Determine the Type of Fall.

Step 4. If Accidental and Anticipated Physiological Falls, determine Preventability:

Could the care provider (direct care provider) have anticipated this event with the information available at the time?

- If the Answer is **NO**, the fall is Not preventable.
- *If the answer is YES, the provider must ask another question: Were appropriate precautions taken to prevent this event?*
- Answer:
 - No, Clearly or likely Preventable;
 - Yes, Clearly or likely Unpreventable